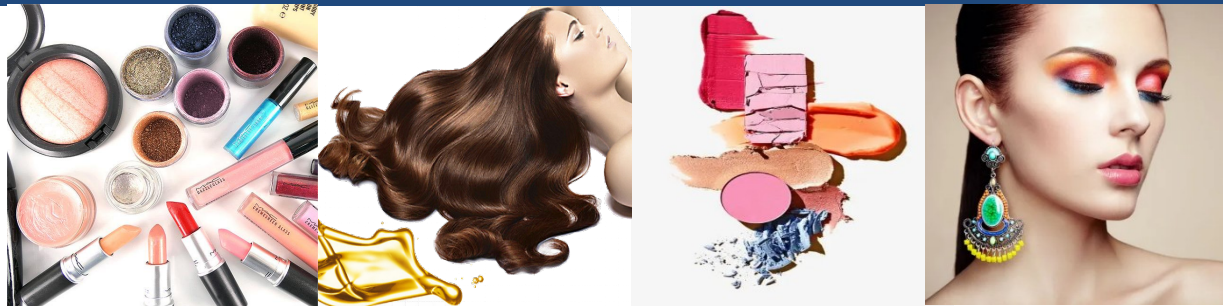


MANTA

Silicone For Personal Care



Nanjing Manta New Material Co., Ltd

The background of the page is a close-up photograph of a woman's face. She has long, wavy white hair and is wearing bright red lipstick. Her eyes are closed. At the bottom of the image, there are three tubes of lipstick in various shades (red, pink, and orange) and a red ribbon that loops around them. The overall aesthetic is clean and modern, with a focus on beauty and cosmetics.

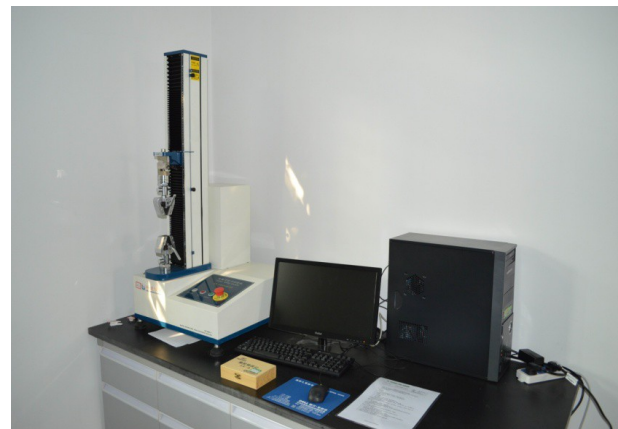
Outlines

Manta introduction	3
Silicone Elastomer Gel	4
Silicone Elastomer Emulsion/Suspension	6
Silicone Elastomer Powder	7
Silicone Resin Film-forming Agent	8
Silicone Emulsifier	9
Silicone Wax	10
Functional Silicone Fluid	11
Volatile Silicone Fluid	12
Compound Silicone Fluid and Silicone emulsion	13
Manta Silicone Offset	16

Manta Introduction

In the ever-evolving world of cosmetics, the journey from concept to consumer involves a delicate blend of science, artistry, and innovation. At Nanjing Manta New Material Co., Ltd. Cosmetic raw materials division (Hereafter called Manta), we are proud to be your trusted partner in this dynamic industry. As a reliable cosmetic raw materials of Silicone and Organic Fluorine Fine Chemicals supplier, we bring you the essential ingredients that empower your brand to create products that inspire beauty and confidence.

Manta stands at the forefront of the cosmetic ingredients market, providing a comprehensive range of high-quality, sustainable, and ethically sourced raw materials that meet the diverse needs of cosmetic manufacturers, from skincare to makeup, haircare, and beyond. Our personal care products include: Silicone Elastomer Gel, Silicone Elastomer Emulsion/Suspension, Silicone Elastomer Powder, Silicone Resin Film-forming Agent, Silicone Emulsifier, Silicone Wax(Water Soluble Silicone Wax and Oil Soluble Silicone Wax), Functional Silicone Fluid, Volatile Silicone Fluid, Compound Silicone Fluid and Silicone emulsion, etc.



Silicone Elastomer Gel

Glycoside Silicone Elastomer Gel

Product	INCI	Cross-linked Polymer %	Base Oil INCI	Appearance	Viscosity 10 ⁴ cp	Specific Gravity	Refractive Index	HLB Value	System
Manta G711	Cyclopentasiloxane (and) Caprylyl Dimethicone Ethoxy Glucoside (and) Dimethicone Crosspolymer	20	Cyclopentasiloxane	Colorless transparent paste	9	0.96	1.396	<3	W/Si
Manta G712	Cyclopentasiloxane (and) Caprylyl Dimethicone Ethoxy Glucoside (and) Dimethicone Crosspolymer	25	Dimethicone	Colorless transparent paste	5	0.96	1.399	<3	W/Si
Manta G712N	Caprylyl trimethicone (and) Caprylyl Dimethicone Ethoxy Glucoside (and) Dimethicone Crosspolymer	25	Caprylyltrimethicone	Colorless translucent paste	4	0.88	1.408	<3	W/O

Water Dispersible Elastomer Gel

Product	INCI	Cross-linked Polymer %	Base Oil INCI	Appearance	Viscosity 10 ⁴ cp	Specific Gravity	Refractive Index	HLB Value	System
Manta G709	Cyclopentasiloxane (and) Dimethicone/Vinyl Dimethicone Crosspolymer (and) PEG-12 Dimethicone (and) Lauryl PEG-9 Polydimethylsiloxethyl Dimethicone	15	Cyclopentasiloxane (and) Bis-PEG-12 Dimethicone (and) Laureth-9	Colorless translucent paste	20		1.403		

Silicone Elastomer Gel

Silicone Elastomer Emulsion/Suspension

Product	INCI	Cross- linked Polymer %	Base Oil INCI	Appearance	Viscosity 10 ⁴ cp	Specific Gravity	Refractive Index	HLB Value	System
Manta G700	Cyclopentasiloxane (and) Dimethicone Crosspolymer	15	Cyclopentasiloxane	Colorless transparent paste	25		1.395		
Manta G700-P3	Cyclopentasiloxane (and) Dimethicone/Vinyl Dimethicone Crosspolymer	16	Cyclopentasiloxane	Colorless transparent paste	30		1.398		
Manta G700B	Dimethicone (and) Dimethicone/Vinyl Dimethicone Crosspolymer	20	Dimethicone	Colorless transparent paste	25		1.398		
Manta G700D	Cyclopentasiloxane (and) Dimethicone/Vinyl Dimethicone Crosspolymer	12	Cyclopentasiloxane	Colorless transparent paste	25		1.395		
Manta G702A	Cyclopentasiloxane (and) Dimethicone Crosspolymer	12	Cyclopentasiloxane	Colorless transparent paste	35		1.395		
Manta G703B	Dimethicone (and) Dimethicone/Vinyl Dimethicone Crosspolymer	25	Dimethicone	Colorless transparent paste	>80		1.398		
Manta G733	Dimethicone (and) Vinyl Dimethicone/Methicone Crosspolymer	22	Dimethicone	Colorless transparent paste	35		1.398		
Manta G701A	Cyclopentasiloxane (and) Dimethicone (and) Dimethicone/Vinyl Dimethicone Crosspolymer	12	Cyclopentasiloxane (and) Dimethicone	Colorless transparent paste	7		1.397		
Manta G722	Isododecane (and) Vinyl Dimethicone/Methicone Silsesquioxane Crosspolymer	15	Isododecane	Colorless translucent paste	20		1.413		

Silicone Elastomer Emulsion/Suspension

Product	INCI	Cross-linked Polymer %	Base Oil INCI	Emulsifying System INCI	Grain Size μm	Viscosity 10^3cP
Manta S781	Dimethicone / Vinyl Dimethicone Crosspolymer (and) Laureth-3 (and) Laureth-25	65	None	Laureth-3 (and) Laureth-25	5	4
Manta S782	Dimethicone/Vinyltrimethylsiloxysilicate Crosspolymer (and) Dimethicone (and) Isododecane (and) Laureth-3 (and) Laureth-25	60	Dimethicone (and) Isohexadecane	Laureth-3 (and) Laureth-25	4	3
Manta S783	Dimethicone Crosspolymer (and) Cyclopentasiloxane (and) Laureth-3 (and) Laureth-25	10	Cyclopentasiloxane	Laureth-3 (and) Laureth-25	3	2

Silicone Elastomer Powder

Product	INCI	Feature	Stacking Density	Appearance	Oil Factor g/g (26# white oil)	Average Grain Diameter um
Manta P706	Dimethicone/Vinyl Dimethicone Crosspolymer	Silicone rubber powder	0.2	No flowing powder, fluffy	2.7	5
Manta P761	Dimethicone/Vinyl Dimethicone Crosspolymer (and) Silica	Composite silicone rubber powder			1.4	15
Manta P762	Dimethicone/Vinyl Dimethicone Crosspolymer (and) Silica	rubber powder coated with silica	0.4	Flowable microspheres	1.3	12
Manta P763	Dimethicone/Vinyl Dimethicone Crosspolymer (and) Silica				1.3	10
Manta P765	Vinyl Dimethicone/Methicone Silsesquioxane Crosspolymer	Silicone rubber powder containing resin structure	0.43	Flowable microspheres	0.8	5
Manta P766	Polymethylsilsesquioxane	Spherical silicone resin powder	0.5	Flowable microspheres	0.5	3

Silicone Resin Film-forming Agent

Product	INCI	Film-forming component %	Base Oil INCI	Appearance	Viscosity mPa.s	Specific Gravity	Refractive Index
Manta A202	Trimethylsiloxysilicate	100	~	White solid powder	~	0.6	~
Manta A203	Trimethylsiloxysilicate (and) Cyclopentasiloxane	50	Cyclopentasiloxane	Colorless transparent liquid	300	1.05	1.405
Manta A203B	Trimethylsiloxysilicate (and) Dimethicone	40	Dimethicone	Colorless transparent liquid	500	1.06	1.407
Manta A203C	Trimethylsiloxysilicate (and) Isododecane	50	Isododecane	Colorless transparent liquid	20	0.98	1.417
Manta A221A	Trimethylsiloxysilicate (and) Polycaprylylsilsesquioxane (and) Isododecane	75	Isododecane	Colorless transparent liquid	400	0.98	1.424
Manta A200	Acrylates/Tri(trimethylsilyloxy) silylpropanol methacrylate copolymer(and) Cyclopentasiloxane		Cyclopentasiloxane	Colorless transparent liquid	200	0.97	1.406
Manta A200A	Acrylates/Tri(trimethylsilyloxy) silylpropanol methacrylate copolymer(and)Isododecane	30	Isododecane	Colorless transparent liquid	30	0.79	1.422
Manta A200B	Acrylates/Tri(trimethylsilyloxy) silylpropanol methacrylate copolymer(and)Caprylyl Trimethicone		Caprylyl trimethicone	Colorless transparent liquid	120	0.87	1.413
Manta A200C	Acrylates/Tri(trimethylsilyloxy) silylpropanol methacrylate copolymer(and)Trimethicone		Methyl trimethicone	Colorless transparent liquid	100	0.88	1.399

Silicone Emulsifier

Product	INCI	Base Oil %	System	Viscosity mPa.s	Specific Gravity	Refractive Index	HLB Value
Manta E1066	Lauryl PEG-9 Dimethicone ~ Ethyl Dimethicone		W/O	700	0.93	1.415	3
Manta E1031	Cyclopentasiloxane (and) PEG/PPG-18/19 Dimethicone	80	W/O	70	0.96	1.4	<3
Manta E1032	Lauryl PEG-8 Dimethicone ~		O/W	300	1.01	1.439	>11
Manta E1035	Lauryl PEG-9 Dimethicone ~ Ethyl Dimethicone		W/O	300	0.96	1.44	4
Manta E1036	PEG-10 Dimethicone ~		W/O	1500	1.01	1.439	4.5
Manta E1038	Lauryl PEG-9 Dimethicone ~ Ethyl Dimethicone		W/Si	1000	0.98	1.44	4
Manta G711	Cyclopentasiloxane (and) Caprylyl Dimethicone Ethoxyglucoside (and) Dimethicone Crosspolymer	80	W/Si	90000	0.96	1.396	<3
Manta G712	Dimethicone (and) Caprylyl Dimethicone Ethoxyglucoside (and) Dimethicone Crosspolymer	70	W/Si	50000	0.96	1.399	<3
Manta G712N	Caprylyl Trimethicone (and) Caprylyl Dimethicone Ethoxyglucoside (and) Dimethicone Crosspolymer	70	W/O	40000	0.88	1.408	<3

Silicone Wax

Water Soluble Silicone Wax

Product	INCI	Appearance	Melting Point ° C	Cloud Point ° C	Specific Gravity
Manta W330	PEG-17 Dimethicone	White paste	33	>50	1.07

Oil Soluble Silicone Wax

Product	INCI	Appearance	Melting Point ° C	Specific Gravity
Manta W333	Stearyl Dimethicone	White flaky solid	52	0.96
Manta W335	C30-45 Alkyl Dimethylsilyl Polypropylsilsesquioxane	White flaky solid	68	0.95
Manta W338	Stearyloxytrimethylsilane (and) Stearyl Alcohol	White flaky solid	46	0.81
Manta W340-25	Cetearyl methicone	White paste	34	0.84
Manta W340-35	C20-24 Alkyl Dimethicone	White paste	33	0.83
Manta W340-45	C26-28 Alkyl Dimethicone	White flaky solid	52	0.93
Manta W340-55	C30-45 Alkyl Dimethicone	White flaky solid	67	0.94

Functional Silicone Fluid

Product	INCI	Functional Group	Viscosity cSt	Specific Gravity	Refractive Index	Ammonia Value mmol.g-1	Cloud Point ° C
Manta F1006	Dimethicone	methyl	5-10 ⁶	0.92-0.99	1.397-1.404	~	~
Manta F1012	Lauryl Dimethicone	alkyl	3.7	0.83	1.417	~	~
Manta F1056	Phenyl Dimethicone		20	0.99	1.458	~	~
Manta F1056A	Phenyl Dimethicone	phenyl	80	1.02	1.46	~	~
Manta F1057	Phenyl Trimethicone		25	1	1.468	~	~
Manta F1030	Amodimethicone		3000	0.97	1.406	0.36	~
Manta F1030A	Amodimethicone	amino	5000	0.97	1.403	0.2	~
Manta F1031	Bis-aminopropyl Dimethicone		17000	0.97	1.402	0.06	~
Manta F2012	Aminopropylphenyltrimethylsiloxane	aminophenyl	2000	1.07	1.5	0.2	~
Manta F1019	PEG/PPG-15/15 Dimethicone	polyether	500	1.05	1.453	~	>50
Manta F1039	PEG12 Dimethicone		400	1.07	1.456	~	>90

Volatile Silicone Fluid

Product	INCI	Type	Viscosity cSt	Flash Point ° C	Specific Gravity	Refractive Index	Volatilization Rate %(150° Cx3h r)
Manta F1006 (0.65cSt)	Disiloxane	straight	0.65	101	0.76	1.375	100
Manta F1006 (1.5cSt)	Dimethicone	straight	1.5	190	0.85	1.387	100
Manta F1045	Cyclopentasiloxane	ring	4	215	0.95	1.397	100
Manta F1048	Cyclopentasiloxane (and) Cyclohexasiloxane	ring	4.5	215	0.96	1.398	100
Manta F1047	Cyclotetrasiloxane (and) Cyclopentasiloxane (and) Dimethiconol						
Manta F1049	Cyclohexasiloxane	ring	7	245	0.96	1.399	100
Manta F1043	Methyl Trimethicone	branched	1.5	190	0.85	1.387	100
Manta F1046	Phenyl Trimethicone	branched	4	>200	0.92	1.437	>50
Manta F1042	Caprylyl Trimethicone	branched	3.3	>200	0.85	1.410	>50
Manta F1042A	Caprylyl Methicone	side chain	2.3	>200	0.83	1.413	>50
Manta F10412	Lauryl Dimethicone	branched	5.5	>200	0.84	1.415	<50

Compound Silicone Fluid and Silicone emulsion

Compound Silicone Fluid

Product	INCI	High Polymer %	Base Oil INCI	Appearance	Viscosity mPa.s	Specific Gravity	Refractive Index
Manta F1016A	Dimethicone (and) Cyclomethicone			Colorless transparent viscous fluid	5000-12000	0.94	1.397
Manta F10161	Dimethicone (and) Cyclopentasiloxane	15	Cyclopentasiloxane	Colorless transparent liquid	4500	0.95	1.397
Manta F1016C	Cyclopentasiloxane (and) Dimethiconol	15	Cyclopentasiloxane	Colorless transparent liquid	6000	0.96	1.397
Manta F1017	Dimethiconol (and) Dimethicone	12	Dimethicone	Colorless transparent liquid	2000	0.94	1.399
Manta F1017A	Dimethiconol (and) Dimethicone	15	Dimethicone	Colorless transparent liquid	4000	0.92	1.397

Compound Silicone Fluid and Silicone emulsion

Silicone Emulsion

Product	INCI	Oil phase composition	Emulsifying/ Thickening System INCI	Solid Content %	Appearance	pH	D50 um
Manta E604	Dimethicone (and) Cocamidopropyl Betaine (and) C12-15 Alkanol Polyether-3 (and) Guar Hydroxypropyl Trimonium Chloride	Amodimethicone (and) Dimethicone	Laureth-4 (and) Laureth-23	60	Milky	6	25
Manta F605	Dimethicone (and) Laureth-3 (and) Laureth-9	Dimethicone	Laureth-3 (and) Laureth-9	55	Milky	7	4
Manta F666	Dimethicone (and) Laureth-4 (and) Laureth-23	Dimethicone	Laureth-4 (and) Laureth-23	67	Milky	6	3
Manta F688	Amodimethicone (and) Laureth-3 (and) Laureth-9	Amodimethicone	Laureth-3 (and) Laureth-9	20	Colorless transparent	6	0.05
Manta F607	Dimethiconol (and) Dodecylbenzene sulfonate TEA salt	Dimethiconol	Dodecylbenzene sulfonate TEA salt	60	Milky	6	<1
Manta F699	Amodimethicone (and) Steartrimonium Chloride (and) Laureth-3	Amodimethicone	Laureth-3 (and) stearyltrimonium chloride	32	Milky	8	0.2

Compound Silicone Fluid and Silicone emulsion

Silicone Emulsion

Product	INCI	Oil phase composition INCI	Emulsifying/ Thickening System INCI	Solid Content %	Appearance	pH	D50 um
Manta F699A	Amodimethicone (and) Cetrimonium Chloride (and) Trideceth-12	Amodimethicone			Milky		
Manta F699B	Amodimethicone (and) Laureth-3 (and) Quaternium-87 (and) Hydroxyethylcellulose	Amodimethicone	Laureth-3 (and) Stearyltrimonium Chloride (and) Hydroxyethyl Cellulose	18	Milky	5	0.2
Manta F6283	Polyquaternium-18 Dimethicone (and) Laureth-3 (and) Laureth-9	Polysiloxane quaternary ammonium salt-18	Laureth-3 (and) Laureth-9	15	Milky	8	0.05
Manta F686	Aminopropyl Dimethicone (and) Laureth-4 (and) Succinic Acid	Aminopropyl Dimethicone (and) Succinic Acid	Laureth-4	23	Colorless transparent	7	0.05

Manta Silicone Offset

MANTA	Dow	ShinEtsu	Wacker	Momentive
Silicone Elastomer Gel				
Manta G700 Silicone Elastomer Gel	DC-9040(E)	KSG-16(E)	RG-100(E)	SFE-839(E)
Manta G700B Silicone Elastomer Gel	DC-9041(E)			
Manta G702A Silicone Elastomer Gel	DC-9045(E)			
Manta G722 Silicone Elastomer Gel		USG-106(E)		
Manta G707 Silicone Elastomer Gel	DC-9546(S)			
Manta G707B Silicone Elastomer Gel				
Manta G707C Silicone Elastomer Gel		KSG-016F(S)		Velvesil DM(I)
Manta G707D Silicone Elastomer Gel		KSG-42A(S)		
Manta G707E Silicone Elastomer Gel				Silsoft 125
Manta G709 Water Dispersible Elastomer Gel	EL-7040(S)			
Manta G711 Silicone Elastomer Gel				
Manta G711A Silicone Elastomer Gel				
Manta G712 Silicone Elastomer Gel				
Manta G712N Silicone Elastomer Gel				
Manta G713 Glycoside Silicone Mixture			SPG 128 VP(E)	
Manta G706 Silicone Elastomer Micropowder	DC-9506(E)	KSG-100 (E)		
Manta G761 Silicone Elastomer Powder	DC-9701(E)	KSP-101(E)		
Manta G765 Silicone Elastomer Powder	DC-9701(S)	KSP-101(S)		
Manta S708 Silicone Elastomer Suspension	DC-9509(E)			
Manta S782 Silicone Resin Elastomer Suspension	DC-9509(S)			Silsoft E*Pearl(S)
Manta S783 Silicone Resin Elastomer Suspension			EG 19 E	
Manta S783B Silicone Resin Elastomer Suspension				
Silicone Resin Series				
Manta A200 Silicone Acrylate Copolymer		KP-545(I)		
Manta A200A Silicone Acrylate Copolymer		KP-550(I)		
Manta A200B Silicone Acrylate Copolymer				
Manta A200C Silicone Acrylate Copolymer		KP-549(I)		
Manta A202 Silicone Resin Powder	MQ-1600(I)		TMS 803(I)	SR-1000(I)
Manta A203 Silicone Resin Mixture	RSN-0749(I)	KF-7312J(E)		SS-4230(E)
Manta A203B Silicone Resin Mixture	DC-593(I)	KF-7312K(S)		SS-4267(E)
Manta A203C Silicone Resin Mixture		X-21-5595(E)		
Manta A203E Silicone Resin Mixture				
Manta 2A221A Silicone Resin Mixture	MQ-1640(S)			
Manta F2012 Aminophenyl Silicone Resin	DC-2-2078(I)			
Manta P766 Silicone Resin Micro Powder		KMP 590(I)	BELSIL PMS MK(I)	TOSPEARL 120(I)

Manta Silicone Offset

MANTA	Dow	ShinEtsu	Wacker	Momentive
Silicone Wax Series				
Manta W330B Water-Soluble Silicone Wax	DC-2501(I)		DMC-6038(E)	
Manta W335 Silicone Resin Wax	DC-8005W			
Manta W338 Silicone Wax	DC-580 (I)	KF-6012	SDM-6022(E)	SF-1632(E)
Manta W340-35 Silicone Wax	DC-2503(E)			
Manta W340-45 Silicone Wax			CM-7026VP(E)	
Manta W340-55 Silicone Wax	DC-AMS-C30(E)			SF-1642(I)
Functional Silicone Oil Series				
Manta F1038 Silicone Oil	DC-190(E)	KF-351A(E)	DMC-6032(E)	SF-1228(E)
Manta F1039 Water-Soluble Silicone Oil	DC-193(C)		DMC-6031(E)	SF-1288(E)
Manta F1030 Amino Silicone Oil	DC-2-8566(E)	KF-801(E)		SF-1708(E)
Manta F1031 Amino Silicone Oil	DC-2-8566(I)	KF-8008(E) KF-8015(S)		
Manta F2012 Aminophenyl Silicone Resin	DC-2-2078(I)			
Manta F1012 Low Viscosity Alkyl Silicone Oil	FZ-3196(I)			Silsoft-034(I)
Manta F1025 Silicone Oil	DC-2502(E)		LDM-3107(E)	
Manta F1056 Phenyl Silicone Oil	DC-556(E)	KF-56A(E)	BELSIL PDM-20(E)	SF-1550(E)
Manta F1057 Phenyl Silicone Oil	DC-556(I)	KF-56A(S)		
Manta 512 Skin Care And Hair Care Silicone Oil	DC-1403(E)			
Manta F1006 Dimethyl Silicone Oil	PMX-200(I) DC-200(I)	KF-96(I)	DM(I) AK(I)	SF-96(I)
Manta F1016C Skin Care And Hair Care Silicone Oil	DC-1501(S)		CM-1000(I)	
Manta F10161 Skin Care And Hair Care Silicone Oil	DC-1401(I)	A-107-A(I) KF-9004(I)	CM-1000(I)	SF-1214(S)
Manta F1017 Skin Care And Hair Care Silicone Oil	DC-1503(I)	A-108 (I)	DM-3096VP(I)	
Volatile Silicone Oil Series				
Manta F1042 Caprylyl MT Silicone Oil	PMX-200-1.5cs(I)	KF-96L-1.5cs(I)		CD-034(S)
Manta F1042 Caprylyl MT Silicone Oil	FZ-3196(S)			CD-034(S)
Manta F1042A Caprylyl MT Silicone Oil	FZ-3196(I)			CD-034(I)
Manta F1043 Methyl MT Silicone Oil		TMF-1.5(I)		
Manta F1046 Phenyl MT Silicone Oil				
Manta F10412 Lauryl MT Silicone Oil				
Manta F1045 Volatile Silicone Oil	DC-245(I)	KF-995(I)	CM-040(I)	SF-1202(I)
Manta F1048 Volatile Silicone Oil	DC-345(E)			SF-1256(I)
Manta F1049 Volatile Silicone Oil	DC-246(I)			SF-1217(I)

Manta Silicone Offset

MANTA	Dow	ShinEtsu	Wacker	Momentive
Emulsified Silicone Oil Series				
Manta F605 Emulsified Silicone Oil	DC-1352(E)	KM-902(E)		SM-2169(E)
Manta F606 Emulsified Silicone Oil		X-52-2160(I)		
Manta F607 Emulsified Silicone Oil	DC-1785(S)			
Manta F686 Aminopropyl Silicone Oil Microemulsion				
Manta F688 Amino Silicone Oil Microemulsion	DC-8168(I)	B-238B(S)		SM-2115(S)
Manta F699 Cationic Amino Silicone Oil Emulsion	DC-949(I)	KM-907(E)	ADM-6057(E)	SM-2059(E)
Silicone Surfactant Series				
Manta E1031 Formulation Additives	DC-5225C(E)	KF-6011(S)	SPG-128VP(S)	SF-1328(S)
Manta E1031B Formulation Additives	DC-5226DM(E)			
Manta E1032 Formulation Additives		KF-6012(S)		
Manta E1035 Formulation Additives		KF-6038(E)		
Manta E1036 Formulation Additives		KSG-6017(S)		
Manta E1038 Formulation Additives		KF-6038(S)		
Manta E1066 Formulation Additives		KF-6038(E)		
Remark: I=Identical; E=Equivalent; S=Similar				



How can we help you today?

When you need application assistance, Manta are glad to help.

Our team is looking forward to hearing from you.

MANTA



Nanjing Manta New Material Co., Ltd

Contact Person: Clara

Mob/Whatsapp: 0086 18962800162

Email: sales@mantasil.com

Website: <http://www.mantasilicone.com>